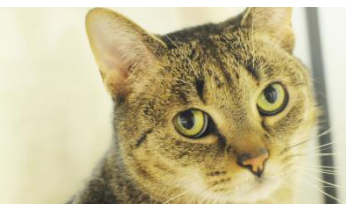
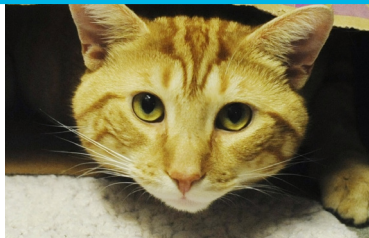


be their hero



ANNUAL REPORT
2019



BIDEAWEE BOARD OF DIRECTORS

2019

OFFICERS

Joseph L. Sorbera, Jr., *Chair*

Leslie C. G. Campbell, *Vice Chair-Administration*

Todd B. Richter, *Vice Chair-Strategic Planning*

Steven R. Victorin, *Treasurer*

Pamela Laudenslager, *Secretary*

Leslie Granger, *President and CEO*

DIRECTORS

Kurt A. Abrams

David H. Best, MD, MBA

Kevin Davis

Patricia Haegele

Lynn Killeen, CPRIA

Robert G. Koen

Keith Manning, DVM

Doug Ray

Patricia Stewart

Kimberly Yarnell

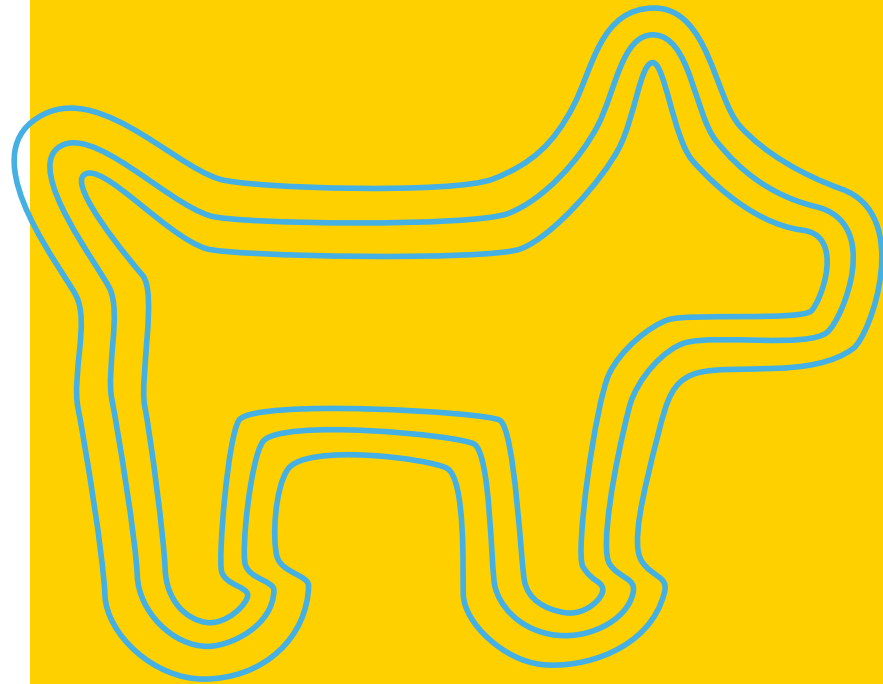
Thomas W. Young

together...

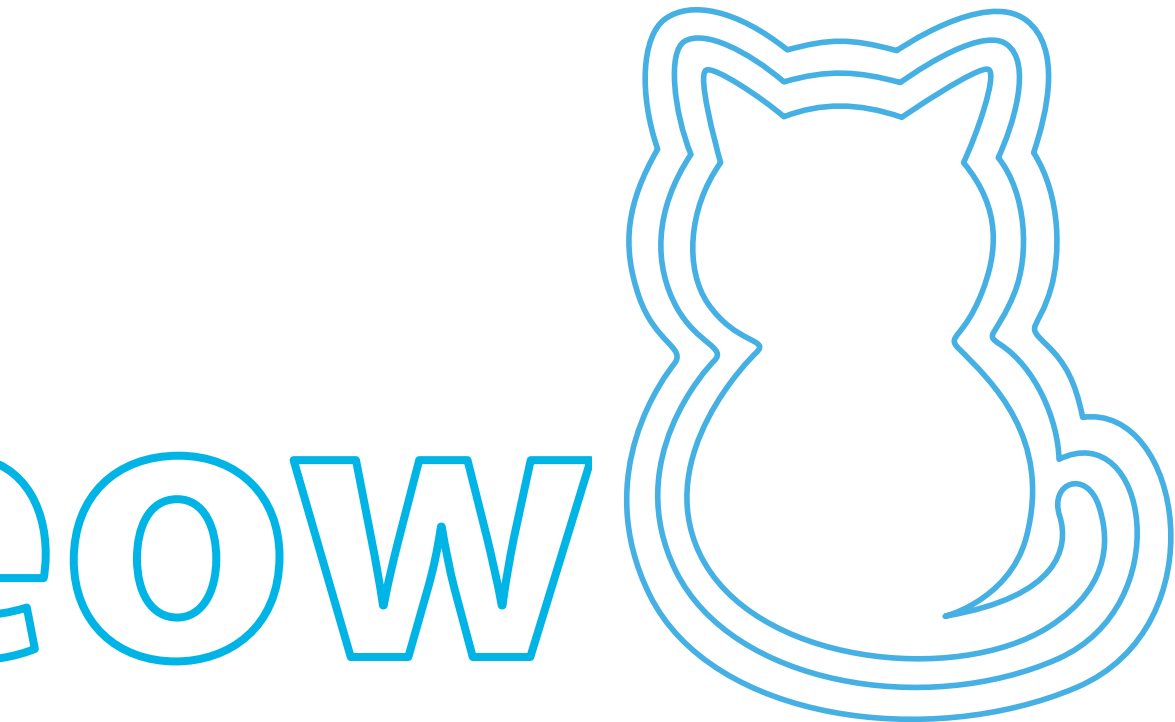




**are on
a mission...**



oof



**to find
loving
homes
for
rescued
animals.**



LETTER FROM OUR PRESIDENT

On the cusp of Bideawee's 116th anniversary, the organization underwent a transformation, shedding its familiar brown and pink skin, its iconography, and its tagline and stepping into a bright, bold future.

The Bideawee of more than a century had served the people and pets of New York well, and I'm incredibly proud of the decades of success we have achieved—from establishing one of the first no-kill animal shelters in the country to almost doubling our adoption numbers in recent years—but it was time for a change. In June of 2019, at the Bideawee Ball, the organization celebrated its 116th birthday with a brand new look and a renewed commitment to building and nurturing the special connection between humans and animals.

An essential element of Bideawee's redesign was the creation of a new tagline that would communicate not only our mission—but what lies at the heart of every relationship between an adopter and the animal they share their life with, and with that, "Be their hero" was born.

It is more than a tagline; it is a guiding principle in every stage of our work and it is at the foundation of the three key areas that drive our efforts—Prevention, Problem Solving, and Cultivation of the Human Animal Bond.

This year, we added a critical program to our Prevention efforts when we assumed leadership of the New York City Feral Cat Initiative, which focuses on humanely reducing the population of community cats in New York City by supporting the efforts of organizations and individuals who work to help stray and feral cats and perform TNR. This program joins the ranks of several other prevention efforts including Training & Behavior, Medical Care, and Mission Based Vet Care—all aimed at curbing systemic industry-wide problems facing pets and the people who love them.

From the very beginning, Bideawee has been focused on solving the problem of pet overpopulation by helping to care for homeless animals and place them in safe, loving homes, and in 2019, we expanded our

impact by transporting more than 200 animals from overcrowded municipal shelters, finding foster homes for almost 300 animals, holding 52 mobile adoption events and finding homes for 1,977 animals, all record-breaking numbers for the organization.

Finally, behind every rescue, every adoption, every dog walked, litter box cleaned and slobbery kiss given is the everlasting love we have for these animals, and the feeling is mutual. The human-animal bond is a dynamic relationship between people and animals that positively influences the health and well-being of both, and we support and cultivate this relationship daily with programs like our Veteran's Pet Project, our Pet Memorial Parks and Pet Loss Support Groups, and our Pet Therapy Program.

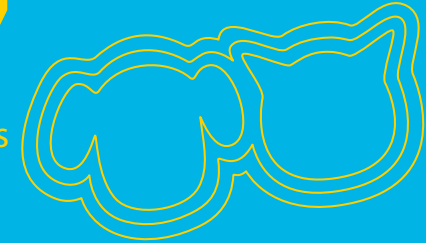
I'm proud of the work we do each and every year, but 2019 was a watershed year for Bideawee in many ways and I couldn't be more grateful. The challenges facing companion animals today are vast and multifaceted but with our strong commitment to prevention, problem-solving, and cultivating the human-animal bond—and with all of you by our side-- I have never been more confident in our ability to save lives, reduce suffering, and be a true hero for animals in need. As always, thank you for working beside us, supporting our efforts, and making our lifesaving work possible.



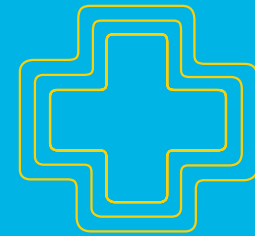
Leslie Granger
President and CEO

In FY19 we had...

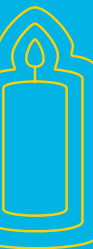
1,977
total adoptions



3,983
hospital visits



1,410
spay/neuter surgeries

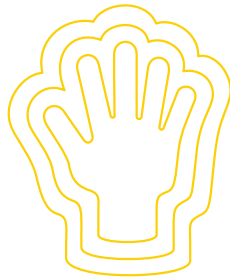


774

burials & cremations
at pet memorial parks

80,265

volunteer hours



996

volunteers

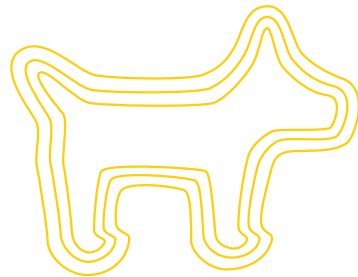
306

animals placed in foster homes



92

pet therapy pairs



ADOPTION CENTERS



**In 2019, more than
1,900 people and animals
left Bideawee with a
best friend and hero
by their side.**

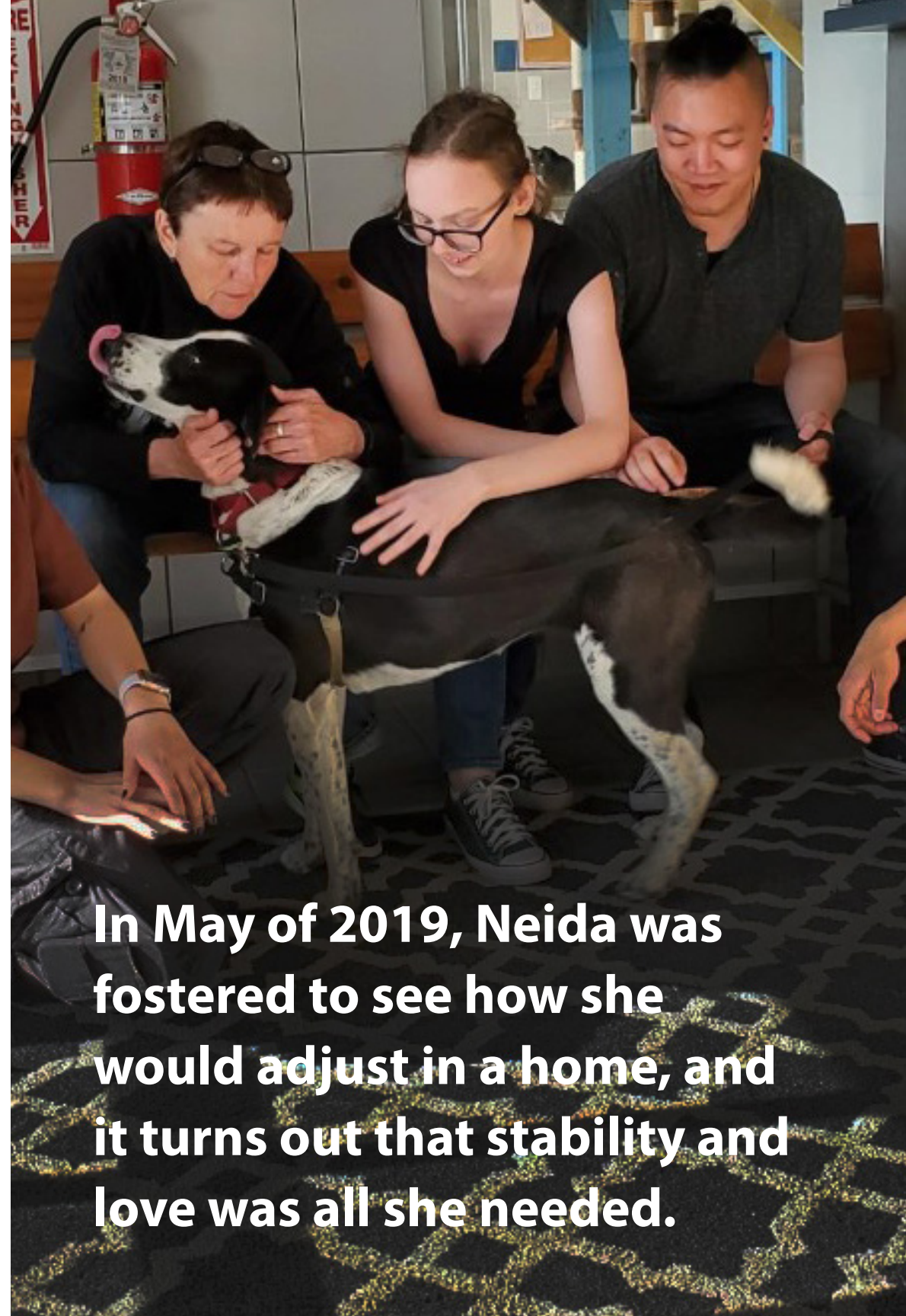
be their hero



Be their hero. It is a concept that begins with the love, care and comfort that every dog and cat receives at our Adoption Centers and continues with the mutual love and companionship that exists between every cherished pet and their forever family.

Some may see only the adopter as the hero, but we see things differently. Being a hero is not a single act, but a series of everyday actions-- the creation of a bond between an animal and a person that changes not just their lives, but ours. We may rescue them, but often times, they rescue us right back.

In 2019, Bideawee continued to open its doors to dogs and cats in need and provide safety, shelter, care, and ultimately, loving forever homes. In addition to working with local city shelters to pull animals at risk, Bideawee transported more than 200 animals from overcrowded municipal shelters in Tennessee, Georgia, California, Puerto Rico, Antigua, and St. Thomas. In September of 2019, when Hurricane Dorian struck the Bahamas, Bideawee immediately sprang into action and partnered with additional groups in Florida and the Bahamas to bring animals affected by the hurricane to the safety of our adoption centers.



In May of 2019, Neida was fostered to see how she would adjust in a home, and it turns out that stability and love was all she needed.

neida & pups



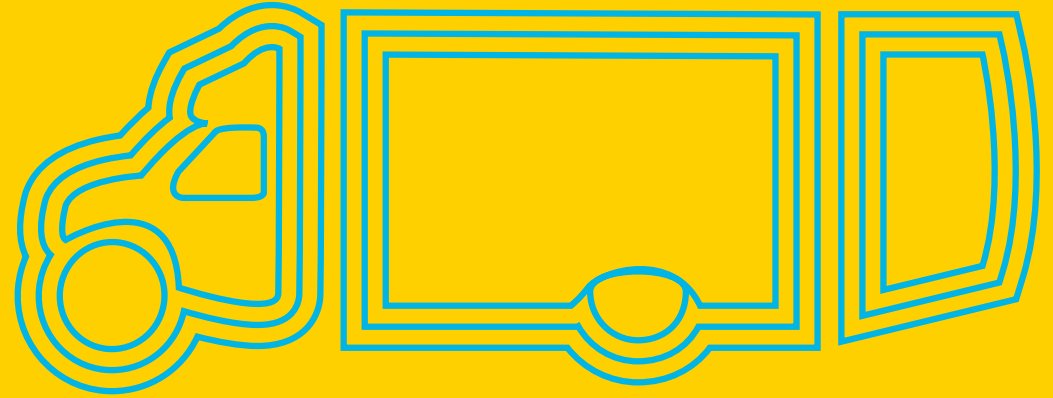
Some of our animals find loving families immediately but others can wait months, even years, and it can feel like a hero will never come. Neida was one of the animals who waited years to find her other half.

She was rescued from Puerto Rico and brought to Bideawee with three of her puppies. All three pups found homes immediately but she wasn't so lucky.

Neida was originally rescued in Puerto Rico as a stray, and then she lived temporarily with several families who tried to care for her both before and after she became pregnant. All that shuffling around took its toll on Neida, and by the time she arrived at Bideawee, she was pretty scared.

In time, she came to love many staff members and volunteers (and the feeling was mutual!) but was still uncomfortable with strangers, so finding her a home was challenging. For more than three years, she remained at Bideawee, and then in May of 2019, Neida was fostered to see how she would adjust in a home, and it turns out that stability and love was all she needed. Her foster family fell in love with her and a few months later, they made it official.

MOBILE ADOPTION EVENTS



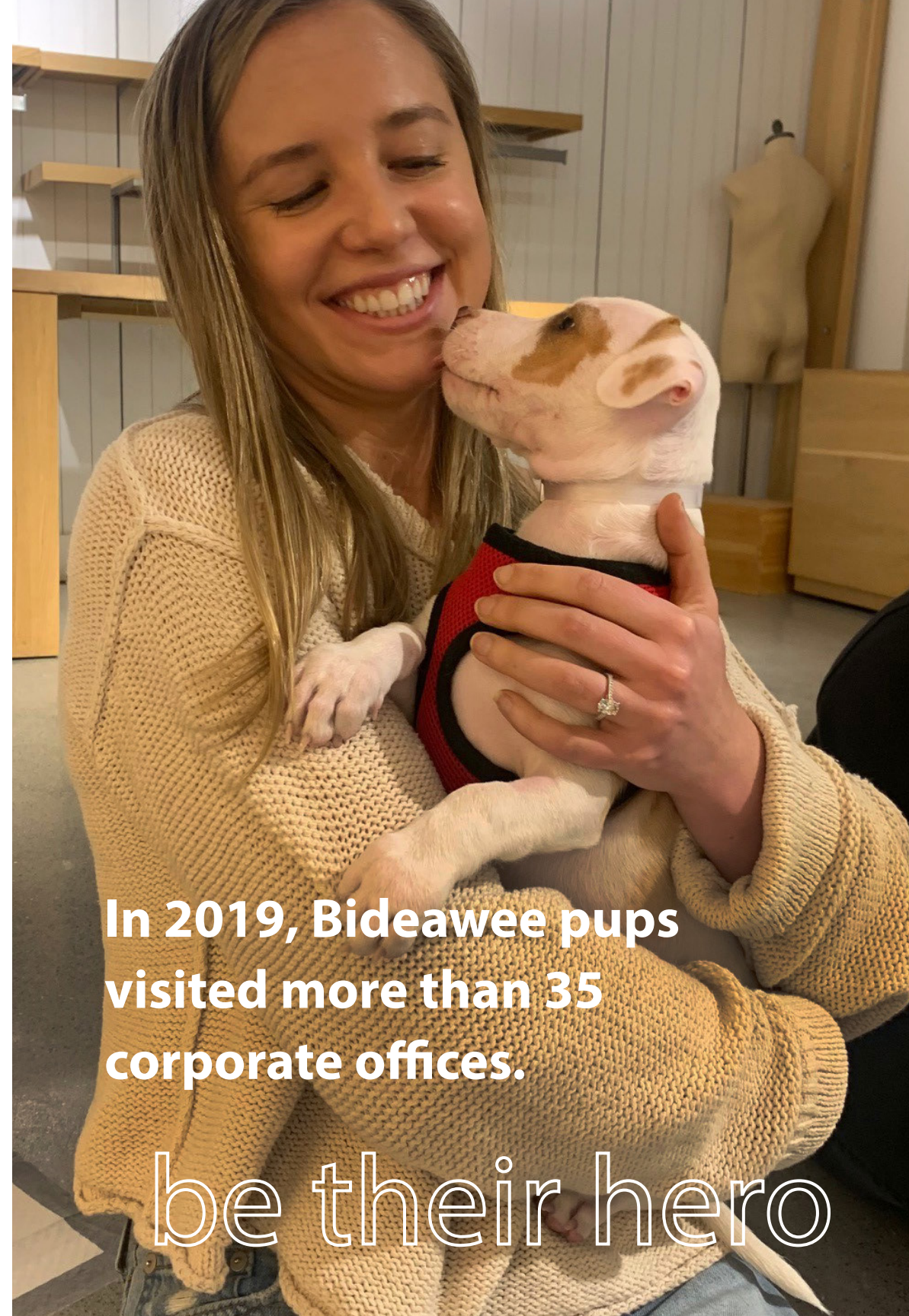
In 2019, Bideawee's Mobile Adoption Van participated in 52 events and found forever homes for 195 animals.

on the road



Bideawee's Mobile Adoption Van hit the road for the 3rd year making stops across New York City and Long Island. The van participated and hosted in 52 events in FY19 finding forever homes for 195 animals. The adoption numbers at Mobile Adoption Events have more than doubled since it's first year on the road in 2016. We have also widened the van's outreach to include frequent stops in Long Island City and Brooklyn as well as Nassau County, Suffolk County and the East End of Long Island.

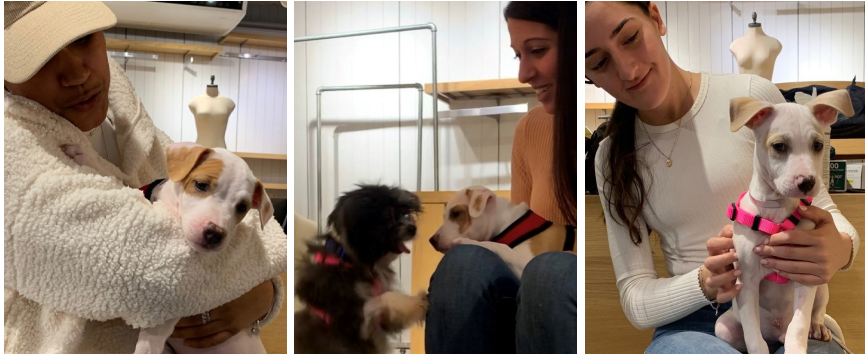
This past summer, Bideawee hosted its first Summer Pop Up Adoption Center on Main Street in Westhampton called "Bideawee on Main." From July 4th through Labor Day Weekend, Bideawee operated an Adoption Center out of an available retail space right in the heart of town. Only 10 minutes from our Westhampton location, this pop-up site not only increased adoptions in Westhampton, but also strengthened Bideawee's visibility and presence in the community. We hope to make this an annual occurrence in Westhampton and continue to drive traffic and awareness during the popular summer months in the Hamptons.



In 2019, Bideawee pups visited more than 35 corporate offices.

be their hero

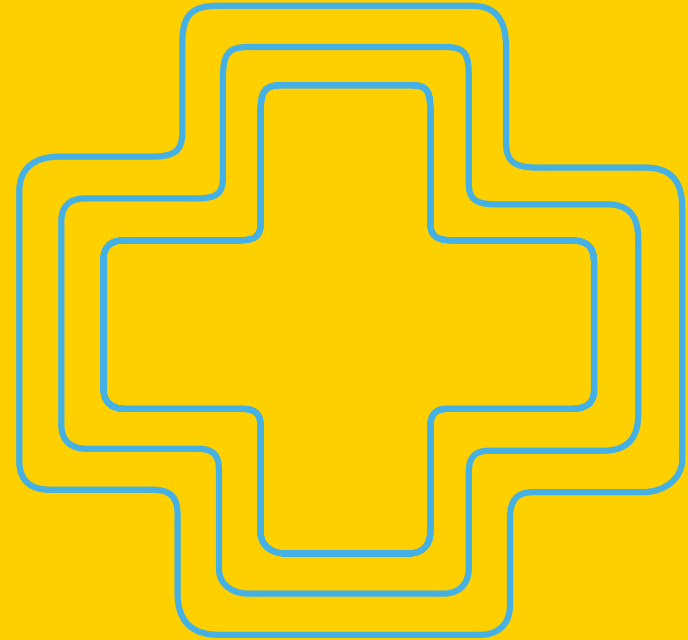
cuddles welcome



In addition to our adoption events, Bideawee's Cuddle Events continued to gain popularity with companies in New York City. Bideawee's Cuddle Events allow us to socialize our adoptable dogs with employees at major companies across New York City. This year, Bideawee pups visited more than 35 corporate offices including Barclays, Neuberger Berman, Christie's, Hilton Hotels, Horizon Media and the Office of the Chief Medical Examiner and those events resulted in more than \$10,000 in donations in FY19.



VETERINARY CARE



In addition to the more than 1,900 resident animals that Bideawee's Animal Hospital cared for in 2019, there were almost 4,000 visits to our Westhampton hospital, which treats both private clients and Adoption Center residents.

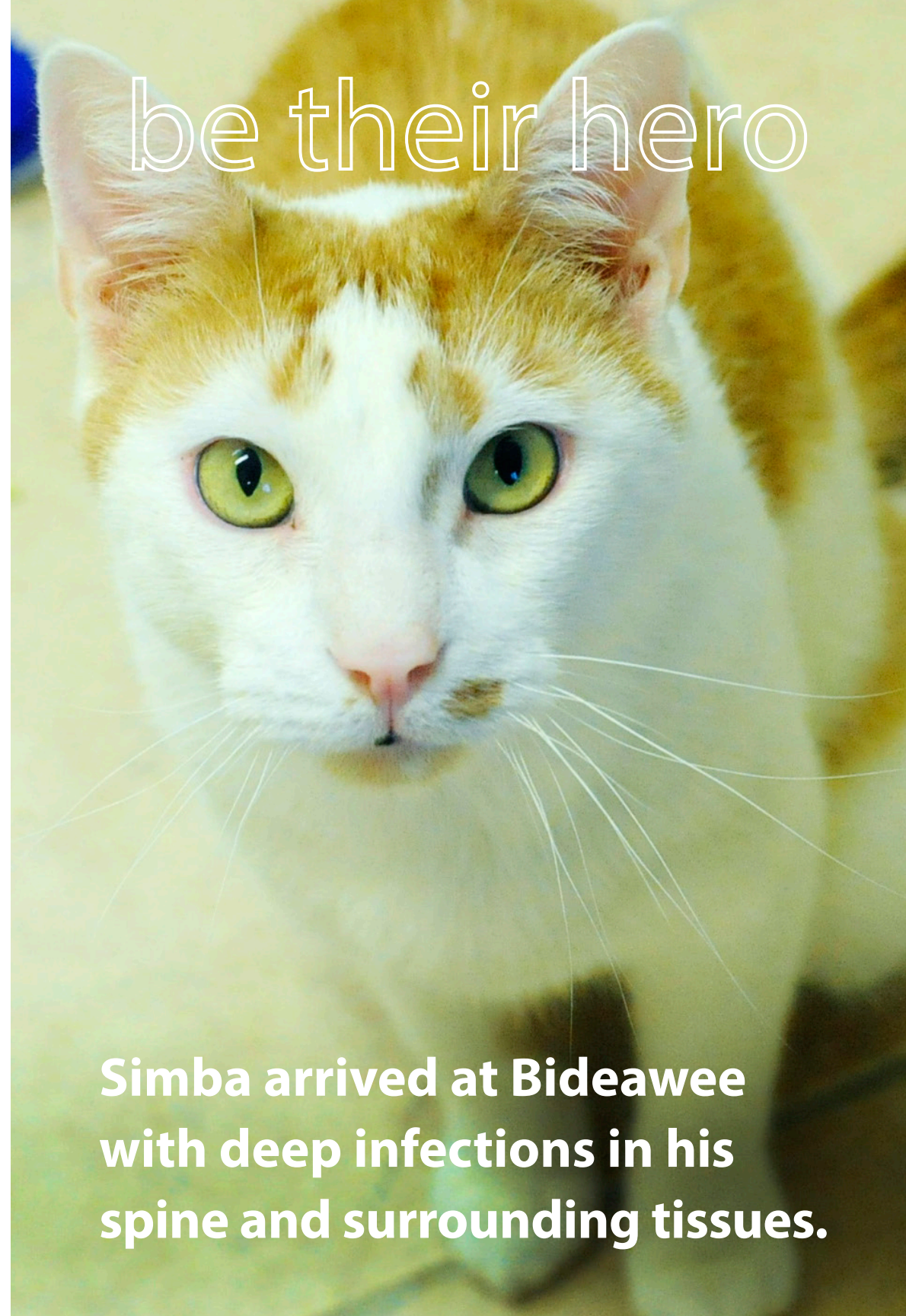
PAWS surgical



Whether they are performing spay/neuter surgeries, treating upper respiratory infections, caring for senior animals, nursing injured and abused animals back to health, or carrying out lifesaving operations, Bideawee's medical staff are on the front lines, performing heroic acts each and every day.

In 2019, Bideawee's Animal Hospital saw an influx of senior animals—particularly dogs—who were in need of various forms of care ranging from general geriatric care to chronic conditions and surgeries, and because of their efforts, Bideawee was able to find homes for 29 senior dogs, twice as many as the previous year.

This past year also saw the completion of Bideawee's Prevention and Wellness Satellite (PAWS) Surgical Hospital, which includes three isolation units that are enabling the organization to rescue more sick and injured animals, reduce the spread of infectious diseases among our animals, and save the costs of treating them at expensive specialty hospitals.



be their hero

Simba arrived at Bideawee with deep infections in his spine and surrounding tissues.

simba

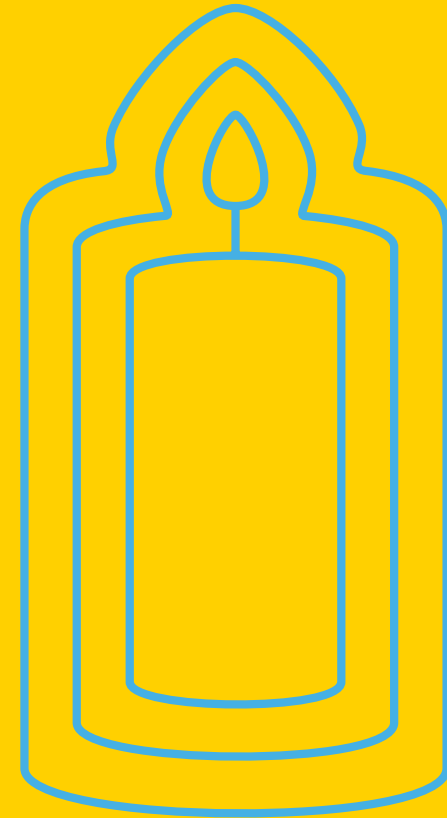


While all of Bideawee's animals pay a visit to the Animal Hospitals at one time or another, and more than 35% require some kind of ongoing care, some of our animals have more extended medical stays than others.

In 2019, Simba was one of those animals. Simba arrived from a city shelter with a deep infection involving his spine and surrounding tissues. For a while, Simba wasn't responding to antibiotics and we didn't know if he was going to make it, but we never gave up on him. This sweet boy kept fighting, and we were there to support him every step of the way.

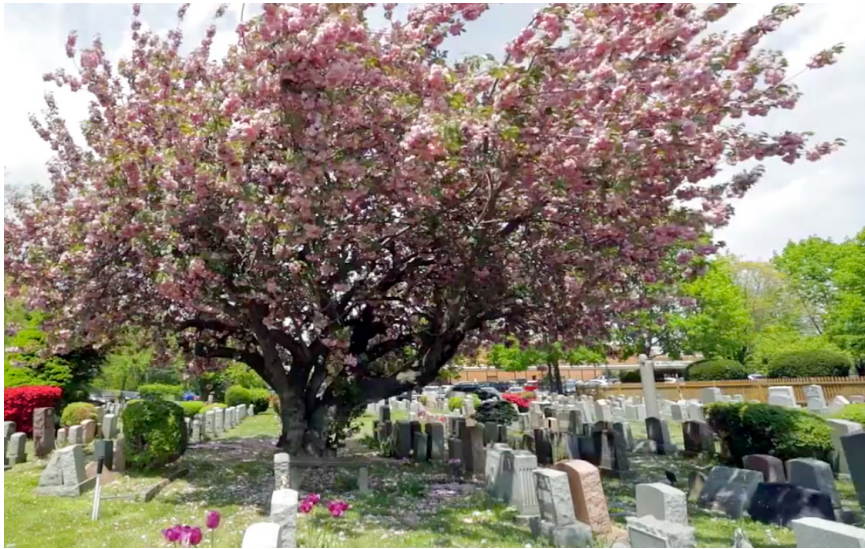
After months of treatment and multiple surgeries, Simba made a full recovery and in April of 2019, Simba said goodbye to his heroes at the Animal Hospital and settled into his new home in Brooklyn!

PET MEMORIAL PARKS



Since 1916, more than 65,000 animals have found a beautiful, serene resting place at the Pet Memorial Parks in Wantagh and Westhampton.

a resting place



When we think of the characteristics of a hero—those we love and admire—we often think of those who put others before themselves; those who are loving, open-hearted, loyal, selfless and devoted—the very same qualities embodied by our four-legged friends.

It's no wonder that most people consider their pets to be beloved members of the family, no different than their human counterparts. With this in mind, Bideawee's founder, Mrs. Kibbe created the Pet Memorial Parks to provide a beautiful, peaceful resting place for the four-legged family members who consistently represent the qualities we value and cherish most.

Since 1916, more than 65,000 animals have found a beautiful, serene resting place at the Pet Memorial Parks in Wantagh and Westhampton, but what continues to set Bideawee's Pet Memorial Parks apart from the others is the care, compassion and comfort that our clients can expect from the moment they pick up the phone or walk through the door. We understand the pain of losing a pet, because we are animal lovers, just like them.



**In 2019, more than 150 attended
Pet Memorial Day in honor of their
beloved pets.**

pet memorial day



In addition to 408 cremations and 366 burials, the Pet Memorial Parks in Wantagh and Westhampton provided a compassionate ear and shoulder to countless families and facilitated pet loss support groups at all three locations.

Additionally, every year, Bideawee's Pet Memorial Parks host a Pet Memorial Day, which gives clients an opportunity to come together and pay tribute to their departed loved ones. The event includes music, refreshments, and a candle lighting ceremony, and in 2019, more than 150 people attended the event.

"To our beloved Max who we miss so very much. You gave us your protection and your love unconditionally. You are forever in our hearts." - Laurie

FOSTER PROGRAM



In 2019, 297 dogs and cats found a hero among Bideawee's expanding foster community.

our fosters



As a no-kill shelter, our animals are with us until the day they are adopted, no matter how long that may take. This means that they will always have a home with us, but it also means that we can only take in as many animals as we have space for, and the need is far greater than our capacity.

In 2017, we addressed this need by launching the Todd B. Richter Foster Care Program. This program enables us to take in more animals and provide temporary homes and personalized care for vulnerable dogs and cats that would be at risk in a shelter environment. Within two years, 297 dogs and cats found a hero among Bideawee's expanding foster community.

These animals included 148 kittens who were too small to be in the shelter; seniors like sweet pup, Karma, who needed multiple surgeries and extensive dental work (her foster mom later adopted her!); and several pregnant animals like pup, Tyra, who gave birth to nine puppies (above) in her amazing foster home! Her foster parents then adopted her and one of the pups and created a Facebook group to keep in touch with all the adopters.

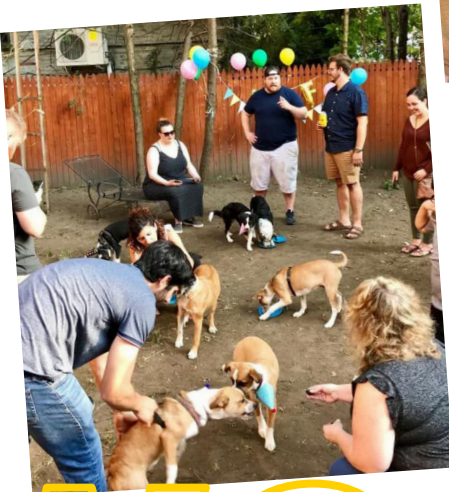
Many of our foster families cared for multiple animals in 2019, welcoming litter after litter, assisting with outreach, and supporting new foster parents throughout their journey.

BIDEAWEE ALUMNI



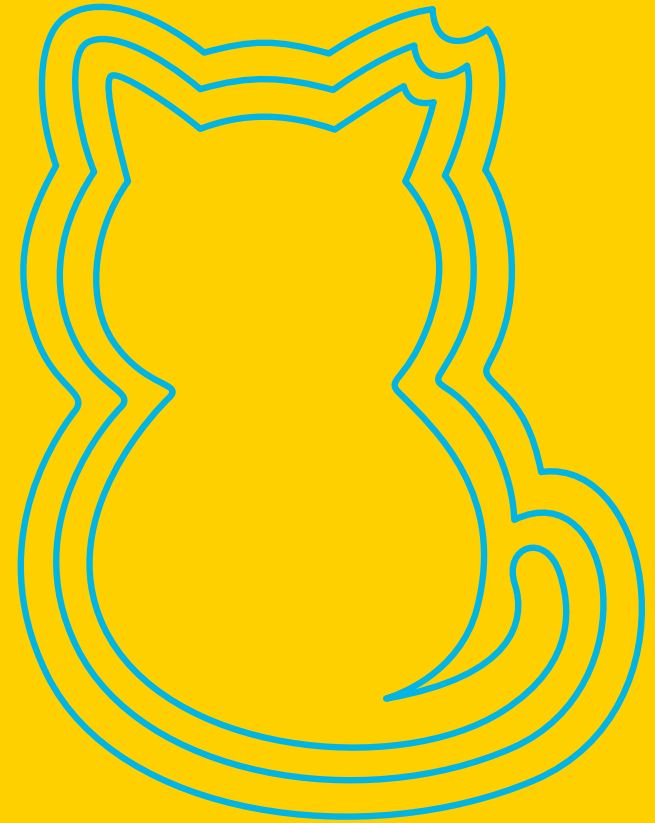
A few months after Tyra was adopted her family threw a party for her 2nd birthday and invited all her pups and their new families!

Happy 2nd Birthday Tyra



woof

FERAL CAT INITIATIVE



Bideawee has been helping stray cats find loving homes since 1903, and in 2019, assumed leadership of The Feral Cat Initiative.

feral & stray cats



Bideawee has been helping stray cats find loving homes since 1903, but in 2019, the organization took a larger role in improving the lives of cats and kittens by assuming leadership of The Feral Cat Initiative, which is humanely reducing the population of feral and stray cats in NYC by supporting the efforts of everyday heroes who work to help “community cats” and perform Trap-Neuter-Return (TNR) in New York City.

2019 was an exciting and productive year for FCI. The FCI team taught more than 20 workshops on TNR, kitten taming, winter shelter building, neighbor relations, and bottle-feeding kittens in various neighborhoods throughout the five boroughs.

Through our email help desks and TNR Colony Registry, we helped hundreds of caretakers network with each other to provide support and assistance, including a Brooklyn TNR caretaker who was in desperate need of transportation to get his backyard colony under control. We networked him with a seasoned rescuer with a car, and now the two are a team, diligently helping cats in rough neighborhoods where very few people are doing TNR.



meet tony



FCI also helped countless little ones like Tony, a two-week-old kitten who was discarded in a bag at a Queens subway station. We called on one of our veteran bottle-feeders and soon tiny Tony was in loving, expert hands, and was later adopted.

Today, Tony (now Deebo) lives in Jersey City and shares his home with a beloved brother named Leo. Thanks to the Feral Cat Initiative, Tony is healthy, thriving, and living happily ever after with his two and four-legged family.

FCI is also actively engaged with groups like Animal Care and Control, the NYPD, FDNY, NYC Parks Dept., and a host of other city agencies, Community Boards, Precinct Councils and private landowners and developers to mediate neighborhood relations, negotiate colony caretaking procedures and parameters, and educate communities and municipalities to ensure the safety and well-being of the cats, as well as the communities they reside in.

VOLUNTEER PROGRAM



**In 2019, Bideawee's
volunteers contributed
more than 80,000 hours
to the organization.**

teamwork



Show me a happy, healthy animal at Bideawee's Adoption Centers and I can show you a team of volunteers who have dedicated countless hours to their well-being -- feeding them, cleaning their living quarters, walking them, socializing them, promoting them, and providing them with the love and care of a family until they find one. Bideawee's volunteers are heroes to our dogs and cats in every sense of the word, and we are eternally grateful for their support and dedication.

In 2019, Bideawee's volunteers contributed more than 80,000 hours to the organization in roles ranging from animal care, to events and administrative work. Bideawee's volunteers played a critical role in the 2019 Clear the Shelters event and helped to carry out several new initiatives in Westhampton, including "Doggy Day Out, a day foster program; and the expansion of Bideawee's Teen Program.



be their hero



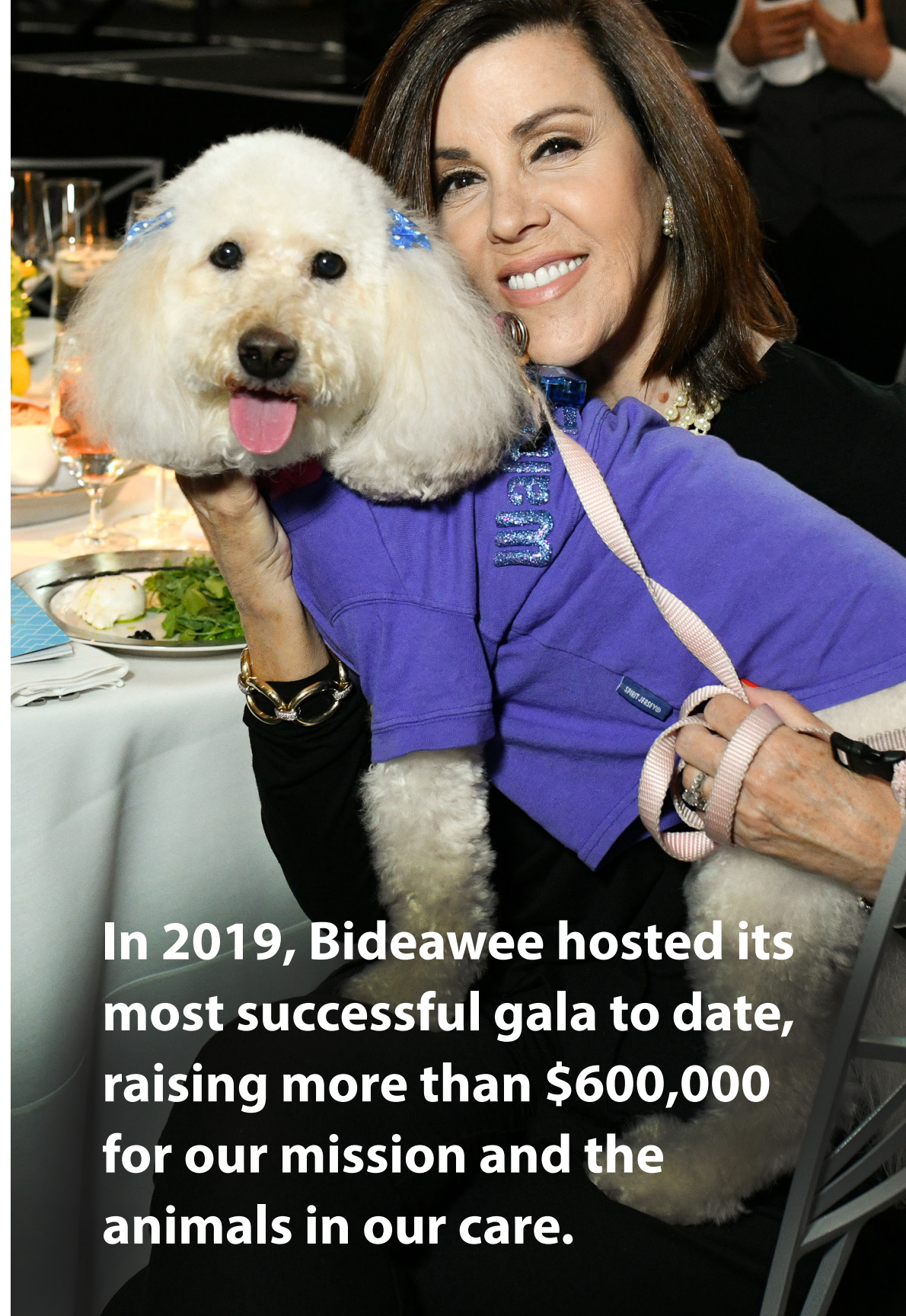
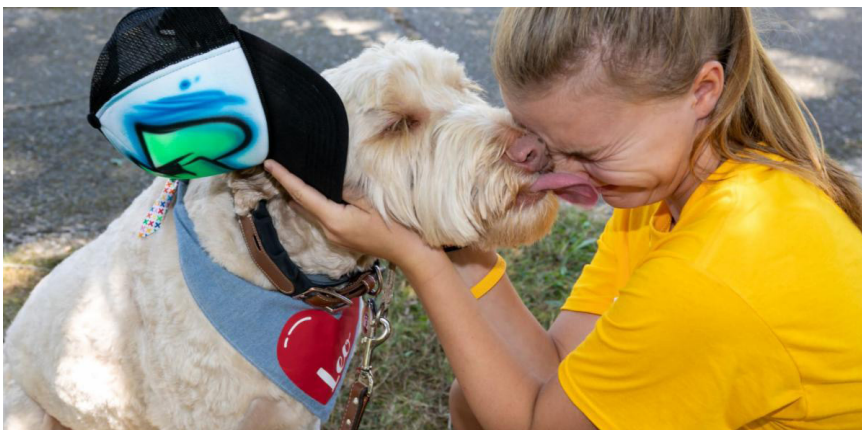
In 2019, Bideawee's Pet Therapy program grew by 14 new teams and 14 new facilities.

pet therapy



Bideawee's Pet Therapy program, which trains pets and their owners to visit nursing homes, hospitals, schools and anyone in need of the love and support of an animal, continued to grow, adding 14 new teams and 14 new facilities in 2019.

This year, several of Bideawee's Pet Therapy teams also attended the Tim Tebow Night to Shine Prom, a beautiful event for special needs children. It was a brand-new event for our Pet Therapy teams and the pups were a huge success.



In 2019, Bideawee hosted its most successful gala to date, raising more than \$600,000 for our mission and the animals in our care.

bideawee ball



The Bideawee Ball was held for the first time at the gorgeous Ziegfeld Ballroom, and welcomed more than 400 guests, including host, WNBC Chief Meteorologist, Janice Huff, honorees Alyssa and Ted Moudis, AIA, and Sydney B. Ireland, who were honored for their longstanding commitment to animal welfare. The event also served as the backdrop for the unveiling of our new logo, tagline, and brand manifesto video, and we were thrilled to have many of the two and four-legged stars of the video in attendance with us that night.



We raised more than \$18,000 to support the renovation of Bideawee's training room.

humane awards



Bideawee's second annual East End Humane Awards Luncheon was held at Patio 54 in Westhampton. Our supporters joined Bideawee for cocktails and lunch to celebrate individual and corporate commitment to saving animals on Long Island, and honor long-time volunteer, Melissa Morgan Nelson and corporate supporter, Teachers Federal Credit Union. We raised more than \$18,000 to support the renovation of Bideawee's Westhampton adoption center training room, helping to improve our ability to connect homeless animals with their forever families.



In 2019, the YPC raised close to \$12,000 through events and online fundraising for Bideawee's animals.

YOUNG
PROFESSIONALS
COMMITTEE



The Bideawee Young Professionals Committee continues to be a force for Bideawee and its mission. In FY19, the YPC raised close to \$12,000 through events and online fundraising. Throughout the year, the YPC hosted signature events such as Cocktails & Canines, and celebrated their 5th Birthday Party. Regular events such as the YPC's Sweat for Pets and Comedy Night at the Stand Comedy Club were well-attended, and they promoted unique events such as the Knicks vs Raptors game at MSG, which raised more than \$2,000.

The YPC also did an online fundraiser to support urgent medical care which raised close to \$3,000. In FY20, the YPC looks forward to bringing together like-minded, animal-loving young professionals in support of Bideawee and the animals they serve.

MAJOR DONORS FY19

\$500,000 - 999,999

Estate of Jeanne Pyne
Estate of Ann Uriarte

\$100,000 - 499,999

Estate of Maria Pia Davino
Estate of Alice Drummond
Lillian Leighton Trust
Helen E. Lowe Living Trust
Estate of Mary Priolo
Estate of Robert A. Schartzner
Marvin and Donna Schwartz
Estate of Alice Smith Franks

\$50,000 - 99,999

Estate of Patricia Brotherton
Ruth Dunn
Regina Bauer Frankenberg Foundation
Mabel Hasbrouck Perpetual Living Trust
Estate of Bella Hechler
Frederick D. Hild and
Harriet A. Hild Living Trust
Estate of Evelyn Jourdan
Estate of Marina Kimble
Estate of Jacqueline A. Turkel

\$25,000 - 49,999

Estate of Elizabeth G. Barton
Estate of Selma Borenstein
Leona Bothmer Foundation
Scott Brakebill
Helen S. Brown Trust
Estate of Eugenie Eschmann
Facebook
The Bruce G. Geary Foundation
Gittleman Vaccaro Charitable Trust
Frances M. Griffin Revocable Trust
Patricia Haegele
Carol Kuczek
Estate of Harold Kushner
Lerner Mooshian Living Trust
Paul & Anna Oschwald Trust
Todd B. Richter

Estate of Anthony Russo
Estate of Dorothy H. Scott
Mark Villamar and Esther Milsted
Estate of Roberta Wailes
Estate of Jerilyn Wren

\$10,000 - 24,999

AYCO Charitable Foundation
Jonathan Bennis
Hilda Brown Trust
Barbara Burns
Claude and Natalie Baumann
The Michele and Agnese Cestone Fdn.
Linda and Barry Cohn
Cross County Savings Bank
Estate of Cynthia L. Eckhardt
Fernando Garcia
Corinne Graber
Estate of Robert Haserot
Hill's Pet Nutrition, Inc.
JLS Cost Management Systems Inc.
Lane Office
Estate of Lenore Lewis Abels
The William J. von Liebig Foundation
Penni Ludwig
Mary M. Luria
Keith Manning
Elizabeth and Michael Moran
Ted Moudis
The Donald R. Mullen Family Fdn Inc.
Laura J. Niles Foundation
Estate of Janet Nixon
Phil Pucciarelli
Theresa E. Rice Trust
Joseph Romano
Ann and Paul Rosche
Charlie and Maura Schwartz
Estate of Linda K. Smith
Joseph Sorbera, Jr.
Patricia Stewart and Frank MacNamara
Estate of Carol A. Streckert
Michael and Alyson Strianese
Steven Victorin
Thomas W. Young

\$5,000 - 9,999

Align Communications, Inc.
 Emma Barnsley Foundation
 Joel Beige Irrevocable Trust
 Neuberger Berman
 David H. Best
 Helen M. Cammisa-Parks
 DFB Sales
 Rudolph Dinkel Trust
 Dogwood Flooring Inc.
 The William H. Donner Foundation
 Mitzi Drossin
 Estate of Stephanie Drossin
 Greg Ericson
 EvensonBest
 Estate of Anne Gillis
 Marisa Gondrez
 Greater Milwaukee Foundation
 The Grey Muzzle Organization
 John Henry
 Carol Hermann
 Ketchum Inc.
 Bill Koenigsberg
 William and Katherine Kouba Trust
 Estate of Lucille Kram
 Dr. Harvey and Nora Krieger
 Endowment Fund
 LaGuardia Gateway Partners, LLC
 Harry L. Levinson
 Estate of Ernest Linderman
 Linear Technologies
 Henry and Kathy Lombardi
 Donna Margolis
 Estate of Marilyn Masiero
 Elisabeth and Timothy McCarthy
 Estate of Myra McKolic
 Patrick McMullan
 The Meehan Consulting Group, Inc.
 Sherif Nahas
 Delia and Kevin von Neuschatz
 Estate of Dorothy Nulty
 Estate of Marie H. Palumbo
 Eileen Rawitz
 Doug Ray and John Olsen
 Eugene and Susan Schwartzwald
 SEI Private Trust Company
 Susan E. Sidd and Marc G. Odrich

Jane and Frances Stein Foundation
 Structure Tone
 Turner Construction Company
 The Leo S. Walsh Foundation
 Estate of Ursula Warner
 The Waterview Foundation, Inc.
 Estate of Norma Weinstein
 Judith Weintraub
 Therese K. White Charitable Trust
 Barrie and Deedee Wigmore
 Kimberly Yarnell

\$2,500-4,999

Architectural Flooring Resource, Inc.
 Ann Berdy
 Carat
 Estate of Eda D. Caroli
 Sarah Casey
 Harvey Cohen
 Jeremy Crume
 Abraham and Rebecca Crystal Fdn.
 Barbara Lee Ebs
 Estate of Stephen H. Flamberg
 The Malcolm Gibbs Foundation
 Samuel Goldberg & Sons Fdn, Inc.
 Goldman Sachs
 Edward Gorey Charitable Trust
 Joe Gowen
 Michael Gray
 Melinda Hackett
 Estate of Anna Hirsch
 Cynthia Hochman
 Indeed, Inc.
 Joan Cohen
 JustGiving
 The Kinnoull Foundation
 Laura Klein
 Chase W. Landreth
 John H. Leitner
 Estate of James P. Licata
 Dorothy Marks
 Joanne Minieri
 Eugene Oberle
 Martha-Louise Parmalee
 Mary Jane Poole
 Lauren Pytel
 Linda Quest

\$2,500 - 4,999 cont'd

Sandra Lee Rogers
 Helen Roosevelt
 Ronni Rothbart and Cathy Goldstein
 Sarah Saltzberg
 John Sheehan
 Estate of Raymond J. Smith
 Robert Stanton and Susan Melden
 Michelle Toll
 Patricia Wadley
 Sandy Walsh
 Laurie Walsh
 Carol S. Weissenberg
 Nancy Wender and Steven Rand

\$1,000 - 2,499

Mark and Leslie Aaron
 Serda Acemoglu
 Marissa Allen
 Mary Amendola
 James Arrajj
 ASM Mechanical Systems
 Assured Guaranty Corp
 Tanya B. Bauer
 Claude and Natalie Baumann
 BC Partners
 Beach Fitness
 Frederick Bear
 Benchmark Builders, Inc.
 Paul Bernstein
 Bianca's Furry Friends
 Phil Binkow
 Barbara Birdsey
 BISSELL Pet Foundation
 Kirstin Booher
 Ronald Bosch
 Estate of Charlotte Bradshaw
 Geralyn Brand
 Broadway Barks
 Estate of Mabel H. Brooks
 Renate M. Buri
 C. A. L. Foundation, Inc.
 Linda Carlozzi
 Millie C. Cassidy
 Certified Moving & Storage Company
 David and Denise Chase
 Shirley Chu

CIBS LI
 Cherylyn Cieri
 Citrin Cooperman and Company, LLP
 Oliver Cope
 Maria Corsaro
 Irene M. Cote
 Charlene Coutre and Stuart Williams
 Ruth Cove
 DaVinci Direct
 Robert Derector Associates
 Rose Devine
 Sereta Down
 Robert Duran
 Abby Duran
 Joseph Dussich
 Tricia Efstathiou
 M.E. Endsley
 Nicolas Erni
 Leigh Ernst
 Steven Estok
 Eurotech
 John J. Farrell
 Ashley Farrell and Brian Coughlin
 Constance Fennell
 Fifth Generation Inc.
 John Fitzgerald
 Grace Forster
 Frank Fortino
 Lois Friedman
 Frederick and Margaret Gabel
 Gabelli Asset Management Company
 Shayne Gad
 Allyson Galishoff
 Arthur J. Gallagher & Co.
 John A. Garraty
 Peter Gaslow
 Al and Gina Gherlone
 Debra Glidden
 Don Goldberg
 Leslie and Phil Granger
 Granite Telecommunications
 Deborah Grimberg
 Herbert E. Groskin Foundation
 Guggenheim Capital, LLC
 Gwen T. Hamilton
 Amanda Hanes
 Leean Hanley

Harry's, Inc.
Gardiner Hempel
Mary Herms and Ryan Marshall
Mandana Hormozi
Steven Hwang
Nina Ianni
Letizia Ingallinera
Joan R. Isaac
Hans G. Jepson
Karen Jewett
Kenneth Johnsen
John Judge
Valda V. Kalnins-Levy
Riki Kane Larimer
Jeffrey Katz
Susan Keppler
Ann Kiesel
Lynn Killeen
Knoll
Robert and Tamara Koen
Kohl's New York Design Office
Laura Landau
Diana L. Langer
Pam S. Laudenslager
Kathleen Law
Angela Lawrence
Tommaso Leo
Julian Leone
Susan Levine
Stephen Libroia
Bruce Lilker
Linda and Patrick Longo
John LoVerde
Marquis George MacDonald Fdn., Inc.
Michele Mahadeo
Elyse Maloni
Peter Marcus
Marks Paneth LLP
Marsh & McLennan Companies
Marsha Diamond
Alyssa Mastromonaco
Lillian Mazzaroli
Elizabeth McCune
Mercer
Raymond and Carol Merritt
Gaetano Messina
Cary Meyers

Rachael Millar
Anthony M. Milone
Milrose Consultants, Inc.
Craig Mitchell
Monse, LLC
Moody's
Heather Moore
Keith Moorhouse
Mary Moran
Donna Musella
Bruno Nacinovich
National Independent Truckers
Insurance Company, RRG.
Gail and Mike O'Neill
Janet M. Neuburger
Richard M. Newman
Colleen Noall
Hugh O'Connell
David W. Ogrin
Leslie O'Loughlin
OnDeck Capital, Inc.
Elizabeth Outlaw
Nicole Passmore
The Piano Exchange Inc.
Michael Polito
Ann Poll
Marlene A. Priest
Diane Provost
Pzena Investment Management
Ray Quartararo
Helen S. Rakowski Trust
Red Apple Group
Marilyn M. Rhodes
John A. Rodger, Jr. Foundation
Rohauer Collection Foundation, Inc.
Lisette Roman
Stewart and Beth Rosen
Harvey Rosen
Mel Rosenfeld
Mary Ruffo
Edward Rufrano
Estate of Charles N. Rumpelt
Susan Ryan
Frank Saggese
Edward J. Santos
Kim Santos
Savills Studley, Inc.

\$1,000 - 2,499 cont'd

Estate of Vilma Sawyer
Estate of Robert Saxe
SBFI North America, Inc.
John Scalfani
Susan Schnellwar
David M. Schoenberg
Greg Schwan
Helen Schwartz
Jordan Schweon
Marjorie and Donald Seltmann
Estate of Kate Seton
Lloyd Shulman
Graham Smith
Joseph Smith and Leslie Hendrix
Georgene and Doug Smith
Ryan Soames Engineering
Benita Somerfield
Joseph Sorbera, III
Spectra Audio Design Group
Victoria Spindler
Diiana R. Oliver-Steinberg
A.B. and J.S. Stevens
Linda Stiklickas
Ralph M. Stone
Strachan Donnelly Trust
Vincent Striano

Judith M. Sultzer
Stephen Swiatkiewicz
SwitHeart Animal Alliance, Inc.
Nicholas Tafuri
Liz Tarnoff
Margaretta Taylor
Teachers Federal Credit Union
Loretta A. Thaler
Martha Thomases
TIAA, FSB
Tri-Star Construction Corp.
Michael Turturro
Rita R. Vallet
Cecilia Wang
WB Wood
Edith Weinstein Trust
Estate of Dorothy Weisenborn
Felecia Weiss
Debbie Werner
Robert H. Wilder
Joane Windayanti
Paul Wolfe
Allison Worthington
Xiaojie Xu
Lois Zarka
Robert Zincone



KIBBE SOCIETY MEMBERS

These individuals have generously included Bideawee in their estate plans.

Chris Alster
Glenn Alterman
Mary Amendola
Jacqueline Anderson
Robert Arata
Carmella Balbus
John Batista
Ellen Baumritter
Marjorie Beck
Frederick Becker
Benjamin Belinka
Evelyn Bencini
Barbara Berg
Marie Bernard
Paul Bernstein
Harry Bevers
Rose Billings
Julia Bistromowitz
Laurie Bodor
Donna Boland
Susan Bookbinder
Lisa Botwinick
Lisa Bradley
Ruth Braren
Karen Brenner
Natasha Brenner
Rosalie Brinton
Ingrid Brock
Jerelyn Brofman
Anne Brooks
Janet Brown
Susan Buck
Eugene Bullock
Renate Buri
Sherry Burkholz
Carl and Barbara Cappadona
Elizabeth Carren
Natalie Carroll
Joan Casterlin
Betty Chiao
Melinda Cogen
Nicholas Colas
Marjorie Conn
John Crafa

Ayn Crawford
Diane Crook
Joan D'Onofrio
Francis Daily
Patricia Daley
Kim Dankner
Trudy Danz
Susan Deangelis-Pfeffer
Richard Diorato
Judith Ditfurth
Mary Dolan
Joseph Donner
John Douw
Deborah Dowling
Zaida Drayton
William Dueker
Marianne Duncan
Nadine Duputel
Ruth Duvall
Stanley Eisenberg
Andrea Eisenberg
Robin Eisenberg
Jane Emery
Barbara Ericsson
Rosa Fay
Gerstein Fisher
Gail Fox
Gail Fraser
Joan Fricke
Gary Friedman
Loretta Friedrich
Lois Gartlir
Henry Gerstenblitt
Marilyn Gilhuly
Janice Ginsburg
Arlene Goldstein
Alan Golnick
Iris Goodgold
Andrew Green
Robert Greenfield
Robin Greif
Garth Griffiths
Tim and Michaela Grob
Stanley Grochala

Murray Gross
Rene Haberstich
Patricia Haegele
Barbara Haimson
Michele Handelman
Martha Harding
Carol Hermann
Sharon Hertz
Barbara Holtz
William Hubschman
Jeffrey Jarman
Kenneth Johnsen
Suzanne Jones
Frances Jones
Julia Kaifer
Lucy Kasiuba
Carol Kaufman
Joyce Keleher
Janet Kelton
Doris Ketcham
Ruth Klain
Rebecca Knaster
Mary Lou Kolody
Irene Kopke
Frederick Korn
Barbara Kraisman
Leticia Lamagna
Chase Landreth
William Lane
Diana Langer
Lynda Laurent
Lauretta Lee
Rhea Lesly
Amy Levine
Debbie Levine
Constance Levy
Barbara Lidsky
Dawn Lind
Helene Linden
Chris Lipari
Monica Lord
Charlene Lorigan
Mary Luria
Lori Malberg
Phyllis Mangels
Marilyn Maras
Carol Marburger

Kendall March
Gerald Marinoff
Jerome L. Mayer
Nancy Mayeski
Linda Mazer
Edward McCarthy
Ann McGarry
Arlene McGrotty
Jeffrey Merritt
Karen Miller
Melinda Mora
Edward Morris
Alex Morse
Denise Murphy
Barbara Myers
Marie Nesthus and Warren Waldbrand
Joan Nikolich
Colleen Noall
John Nore
Alexander Pappas
Salvatore Passamano
Christa Percopo
Edmar Petterson
Nicole Podendorf
Anoop Punjabi
Deborah Rand
Philip Randazzo
Doug Ray and John Olsen
Cheryl Redash
Rosalie Regal
Todd Richter
Joanna Roland
Paul and Ann Rosche
Allan Rosenblum
Ronni Rothbart and Cathy Goldstein
Robert Ruckel
Susan Rudich
Bruce Russell
Karen Russo
Rita Samlong
Jacqueline Sandler
Linda Santaniello
Antoinette Schiavone
Lillian Schieferstein
Ann Marie Schiro
Mack Schlefer
Carolyn Schleger

Marcia Schlesinger
 Gabriele Schmidt
 Ronald Schulhoff
 Helen Schwartz
 Joan Scripps
 Ronald Seibel
 Grace Seid
 Bernice Selcow
 Irene Sidor
 Betty Jane Sidoti
 Carol Sigloch
 Anne Smith
 Benita Somerfield
 Joseph Sorbera
 James Spatafora
 Jo-Ann Sramek
 Ethel Stark
 Shirley Starr
 Elisabeth Stewart
 Patricia Stewart and Frank MacNamara
 Wendy Stiefel
 Richard Stoike
 Anne Strianese
 Joan Susha
 Shari Sveningson
 Santana Taffet

Pamela Tansek
 June Tesauro
 Loretta Thaler
 Paulette Thielman
 Karen Thomas
 Richard Titone
 Carolyn Trager
 Albert Van Damm
 Rosemarie Vane
 Judy Veneroso
 Anastasia Verrino
 Nasir Wajihuddin
 Janice Wallinger
 Linda Ward
 Esther Waters
 Gerald Waters
 Melissa Weiss
 Harry Wells
 Marie Whitlatch
 Joan Young
 Thomas Young
 Abbie Zabar
 Barbara Zalkind
 Lois Zarka
 Monika Zuckermann

Bideawee strives to correctly recognize all donors. We apologize for any errors, omissions or misspellings in this report. To report an error, call our Development Department at 1.866.262.8133.



FINANCIAL STATEMENTS

Statements of Financial Position
 As of September 30, 2019 and 2018

ASSETS

Cash and cash equivalents
 Bequests, legacies and other receivables
 Inventory
 Investments
 Prepaid expenses and other assets
 Property and equipment, net
 Beneficial interest in trust

TOTAL ASSETS

LIABILITIES

Accounts payable, accrued expenses and other liabilities
 Capital lease obligations payable

TOTAL LIABILITIES

COMMITMENTS AND CONTINGENCIES

NET ASSETS

Without donor restrictions
 Available for operations
 Net investment in property and equipment
 Total without donor restrictions
 With donor restrictions

TOTAL NET ASSETS

TOTAL LIABILITIES AND NET ASSETS

FINANCIAL STATEMENTS

Statements of Activities

For the Years Ended September 30, 2019 and 2018

<u>2019</u>	<u>2018</u>
\$ 1,048,436	\$ 2,966,836
1,060,446	1,266,919
140,443	171,602
17,734,536	16,403,721
144,565	153,412
6,021,260	6,141,395
<u>1,017,920</u>	<u>914,793</u>
<u>\$ 27,167,606</u>	<u>\$ 28,018,678</u>
\$ 668,975	\$ 445,898
<u>10,807</u>	<u>2,448</u>
<u>\$ 679,782</u>	<u>\$ 448,346</u>
7,273,063	8,672,328
<u>6,010,453</u>	<u>6,138,947</u>
13,283,516	14,811,275
13,204,308	<u>12,759,057</u>
<u>26,487,824</u>	<u>27,570,332</u>
<u>\$ 27,167,606</u>	<u>\$ 28,018,678</u>

REVENUES, GAINS AND OTHER SUPPORT

Special events revenue
Less: cost of direct benefit to donors
Special events, net
Bequests and legacies
Contributions
In-kind contributions
Adoption centers, animal hospitals, loving legacy and other fees
Cemetery maintenance fees
Other income
Miscellaneous income
Investment income, net of investment fees
Change in value of beneficial interest in split interest agreements
TOTAL REVENUES, GAINS AND OTHER SUPPORT

EXPENSES

Program Services
Adoption Centers
Animal Hospitals
Behavior, learning and volunteers
Feral Cat Initiative
Memorial Parks
Loving Legacy
Total Program Services
Supporting Services
Management and general
Fundraising
Total Supporting Services
TOTAL EXPENSES

CHANGE IN NET ASSETS

Net Assets - Beginning of the Year
NET ASSETS - END OF THE YEAR

<u>2019</u>	<u>2018</u>
\$ 736,720	\$ 700,835
<u>(111,148)</u>	<u>(103,892)</u>
625,572	596,943
3,784,586	5,925,988
1,914,853	1,969,340
105,338	105,385
1,209,851	1,354,824
400,402	350,232
129,970	150,000
70,225	70,176
703,018	716,293
<u>103,127</u>	<u>(17,019)</u>
<u>9,046,942</u>	<u>11,222,162</u>
4,299,229	3,728,039
970,763	1,665,142
474,807	517,520
133,133	-
1,105,609	945,670
<u>68,803</u>	<u>77,765</u>
<u>7,052,324</u>	<u>6,934,136</u>
1,289,110	1,205,892
<u>1,788,016</u>	<u>1,812,201</u>
<u>3,077,126</u>	<u>3,018,093</u>
<u>10,129,450</u>	<u>9,952,229</u>
(1,082,508)	1,269,933
<u>27,570,332</u>	<u>26,300,399</u>
<u>\$26,487,824</u>	<u>\$27,570,332</u>



**BIDEAWEE WOULD LIKE THANK
ALL OF OUR SUPPORTERS FOR
THEIR LOYALTY AND GENEROSITY.
BIDEAWEE DEPENDS SOLELY ON
PUBLIC SUPPORT WHICH ENABLES
US TO CARRY OUT OUR MISSION.**





finding loving
homes for
rescued animals

bideawee.org 866.262.8133